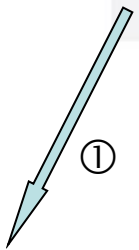
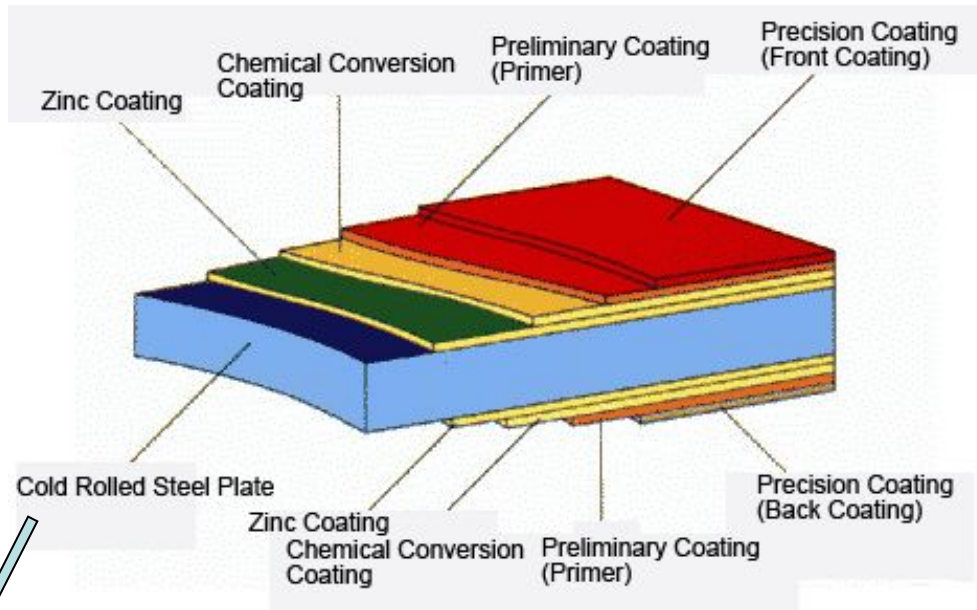
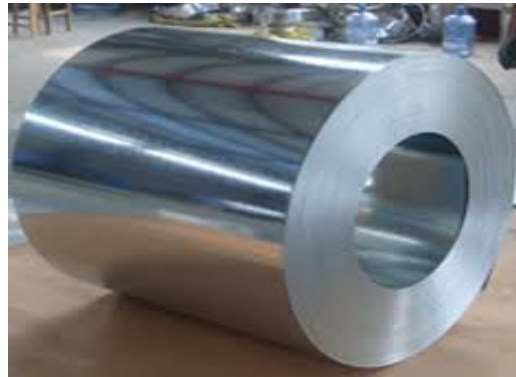
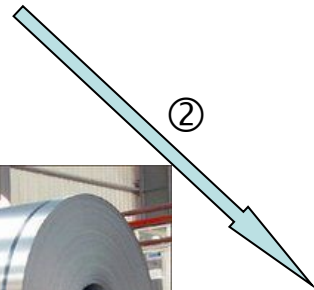


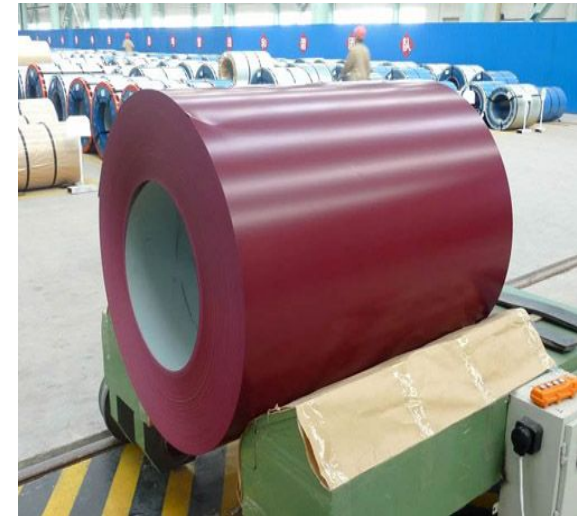
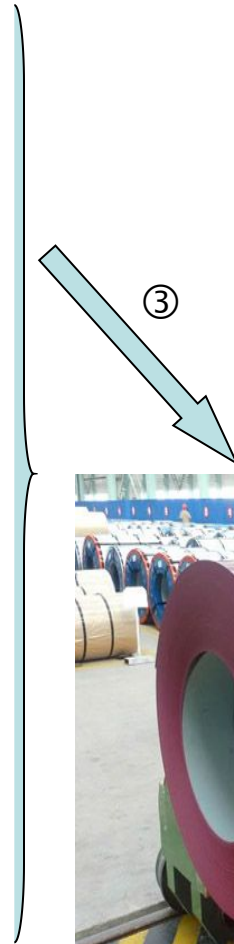
Production Structure picture



Cold Roll(basis plate)



GI

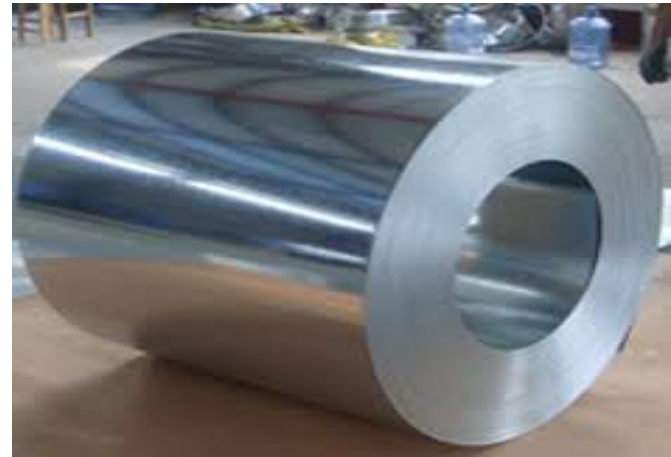


PPGI

What is the GI?



Cold Roll



GI = Galvanized Steel Coils



①

Cold Roll is GI's basic plate

②

Coating

③

GI = Galvanized Steel Coils

What are different between PPGI vs GI?



GI = Galvanized Steel Coils

PPGI = Pre-painted Galvanized Steel Coils

①

②

③

GI is PPGI's basic plate

Coating

PPGI

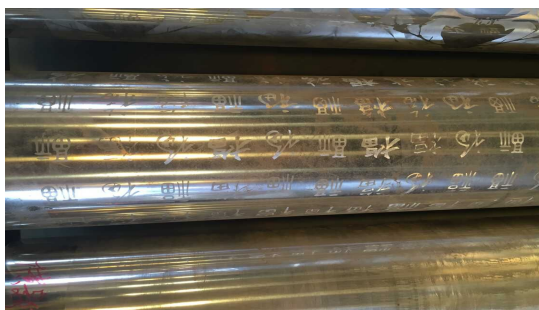
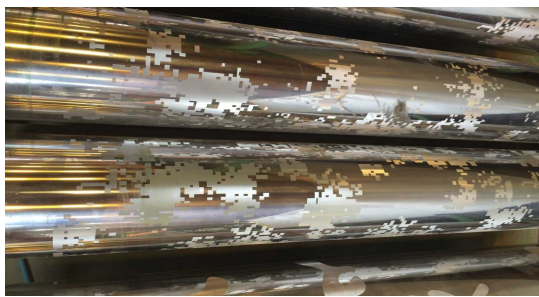
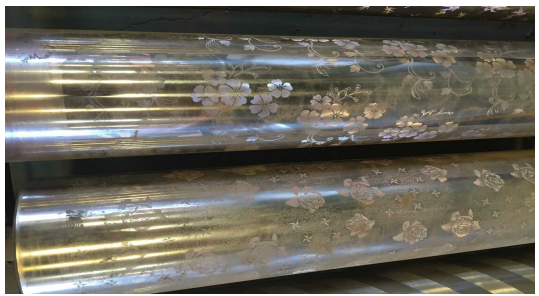


What is the pattern coils?



GI = Galvanized Steel Coils Pattern Steel Coils

Different pattern



and so on

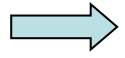


①

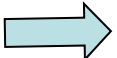
②

③

GI is Pattern Coils's basic plate

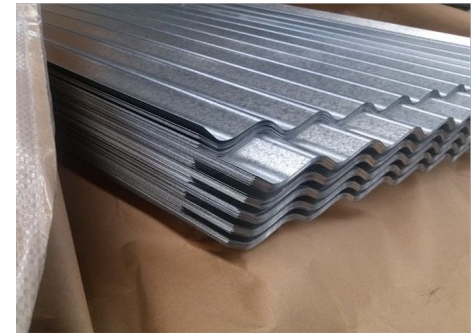
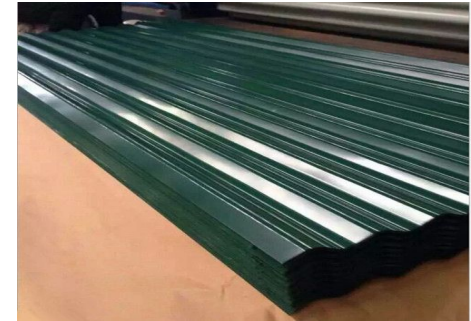
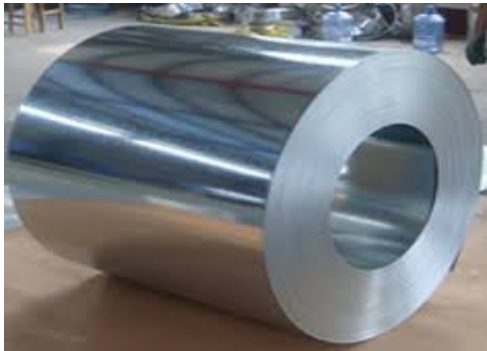
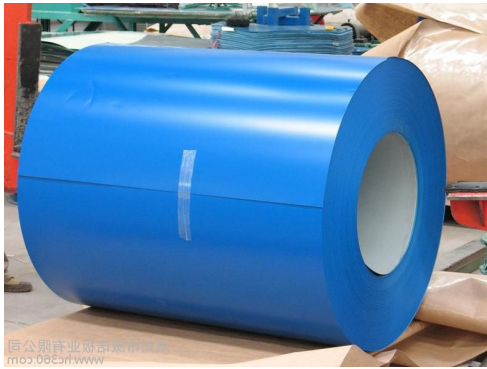


Coating

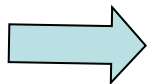


pattern coils

What is the Roofing sheet ?



GI/PPGI



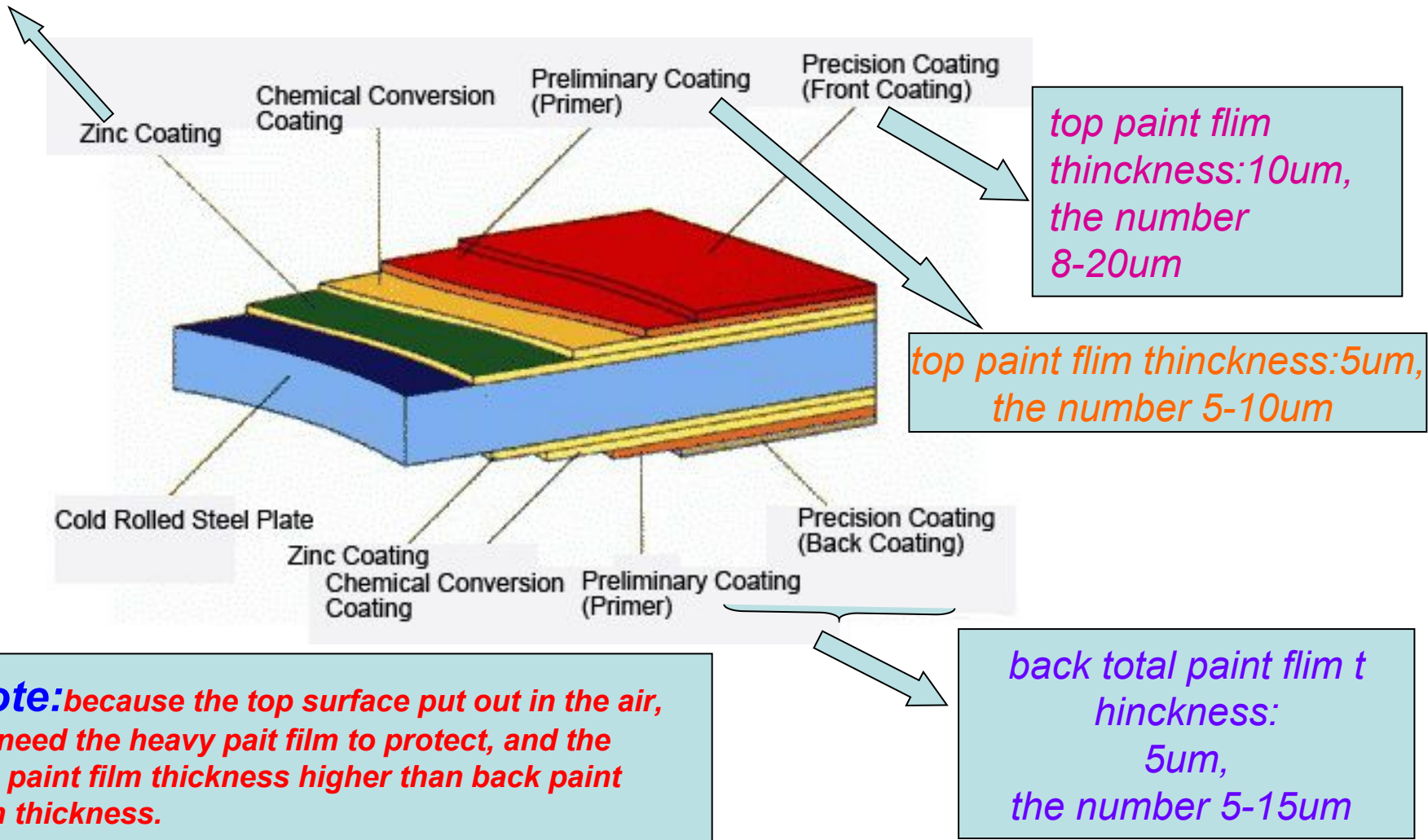
Different Machines



Different Specification

What meant for example :PPGI 5+10/5 ,Z30 ,RAL3002?

Z30G/M2:how many grams zinc per square meter ? the number:from Z20-Z120



What is the RAL No. ?

In order to distinguish the different color, there are a Color Card, every color has itself RAL No, it will help us to produce when customers tell me what the color they want ?

